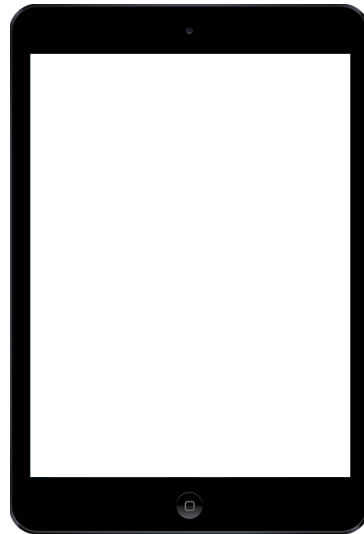


Getting started with your loan iPad (for students)



Setting Up Your iPad from Home

Once you have unboxed and charged your iPad you will need to turn on your device and follow the steps in this guide.

Equipment needed

- To setup your iPad you will need the following:
 - Your iPad
 - Access to an Wi-Fi internet connection
 - Your Oasis username & password

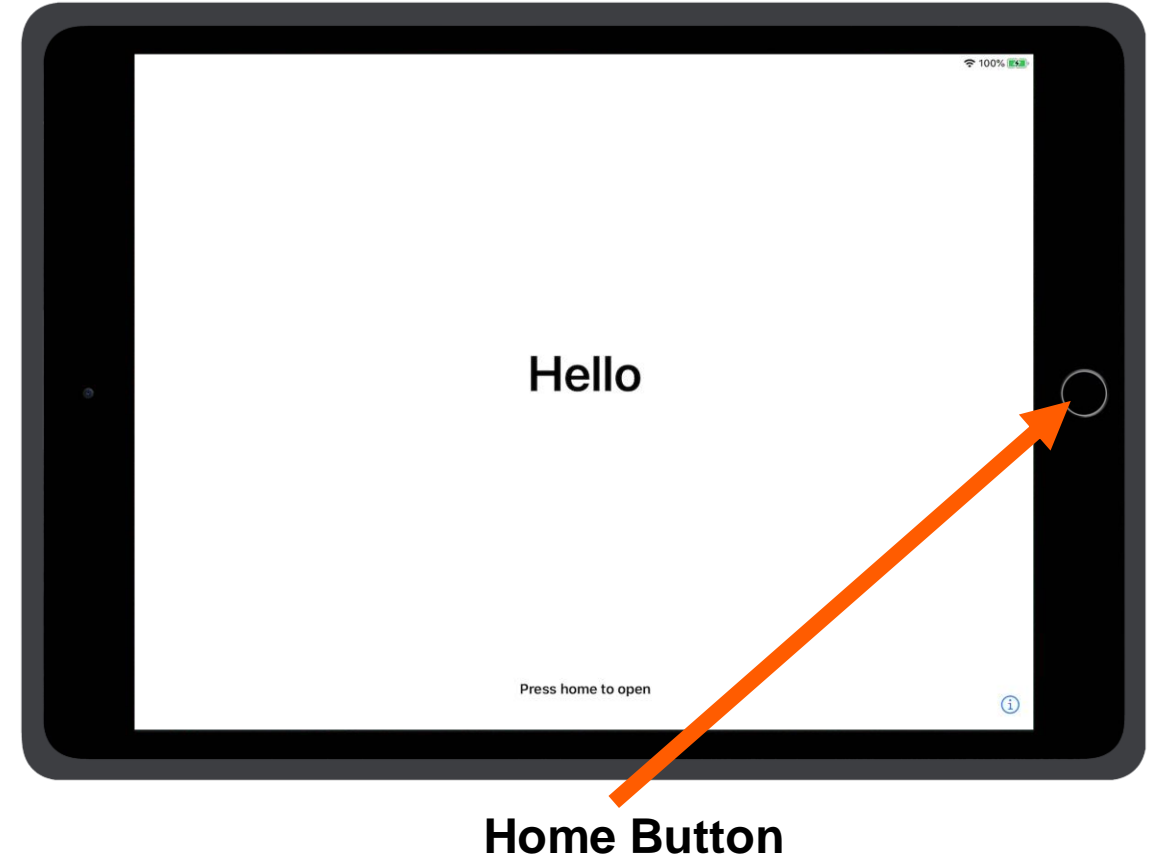
Turning on your iPad

- Ensure your iPad is charged before running through the initial setup procedure. Once it is charged the power button can be found at the top right of your iPad.
- If the iPad is only in sleep mode, you can wake it up by pressing the Home button or the power button.
- If it is fully powered down (which is likely if it's just been unboxed), then you will need to hold down the power button until an Apple logo appears on the front display.



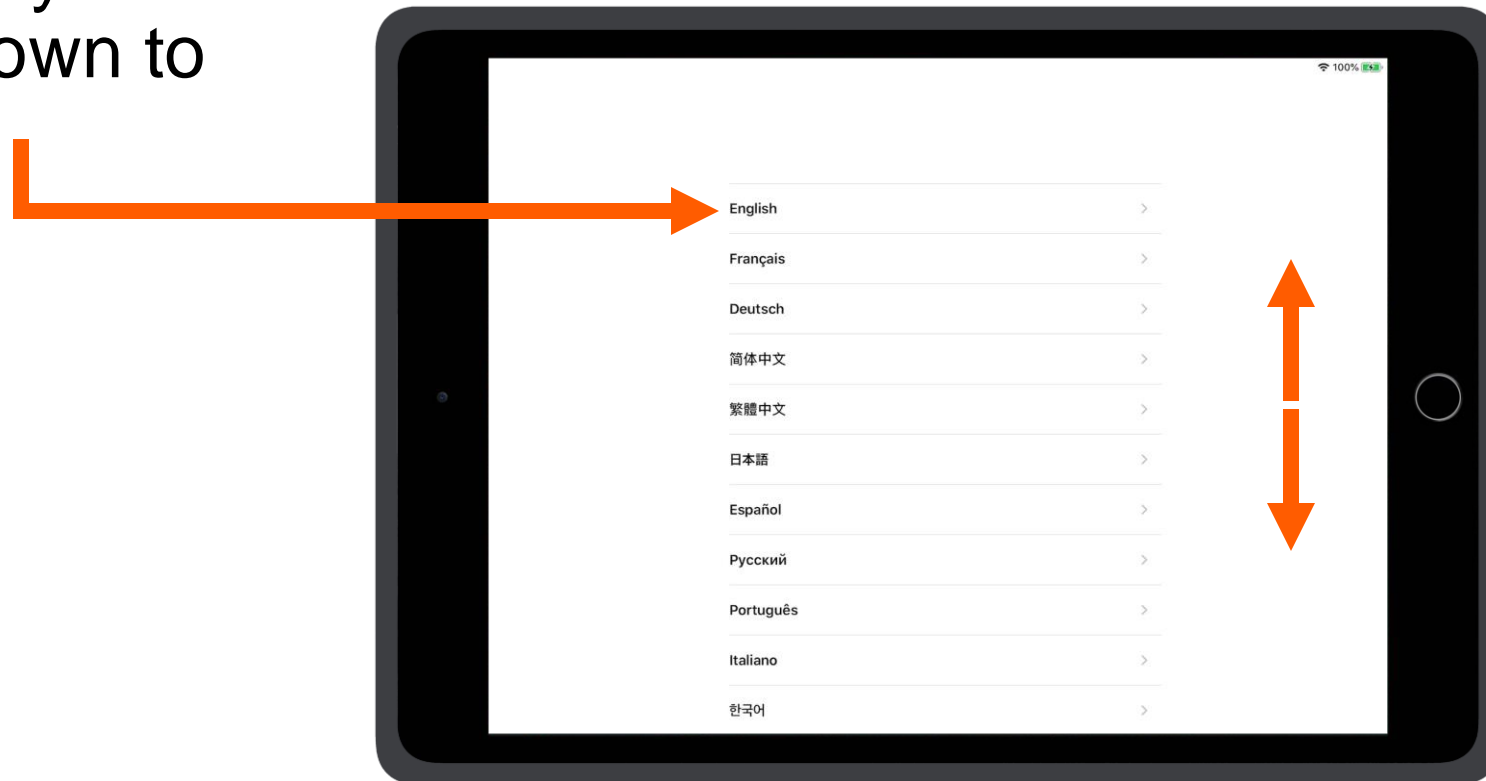
Setting up your iPad – Step 1

- After turning on your iPad the initial screen will load showing “Hello” in different languages.
- Press the Home button to continue.



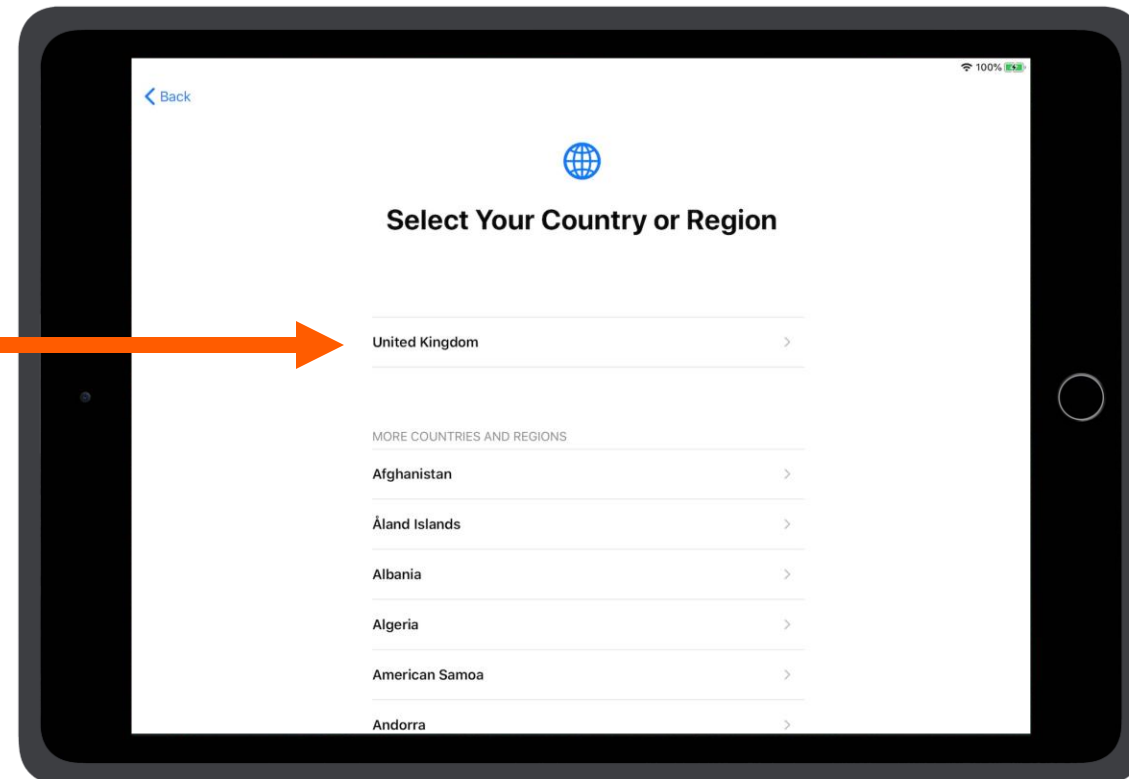
Setting up your iPad – Step 2

Tap the language you want your iPad to use. Swipe up or down to see more languages.



Setting up your iPad – Step 3

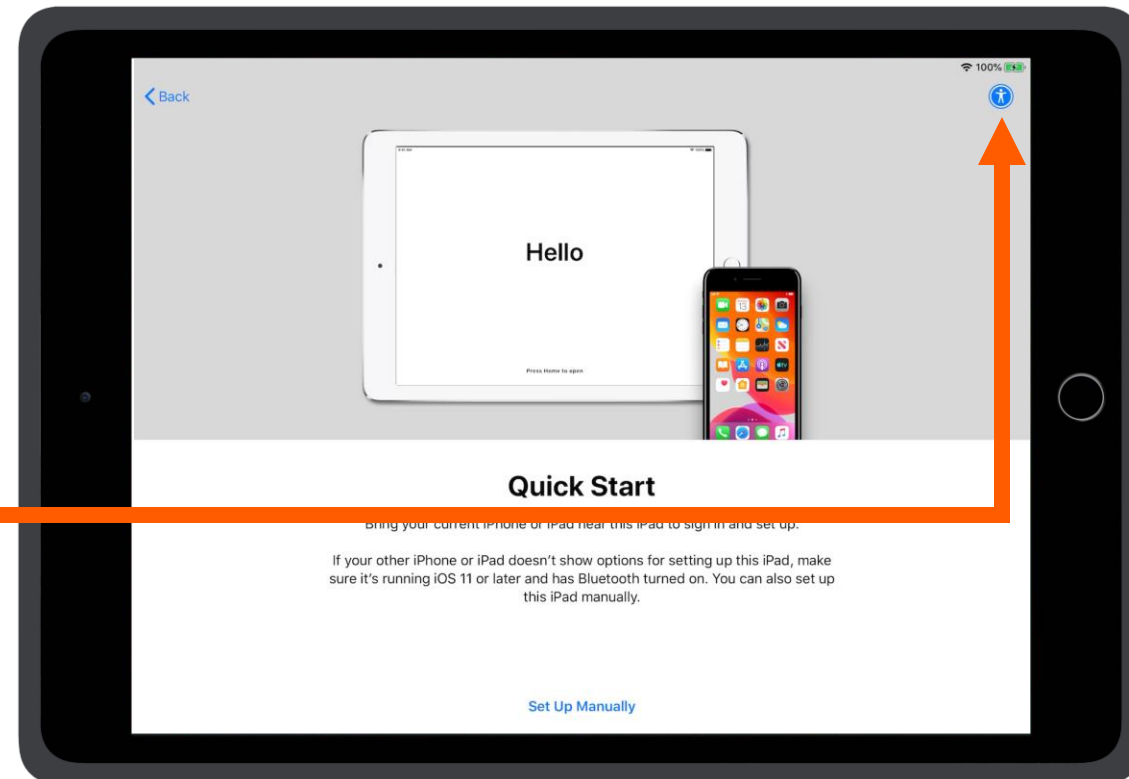
Tap **United Kingdom** as your Country or Region. Swipe up or down to see more countries.



Setting up your iPad – Step 4

Assistive features are built into your iPad to complement your vision, hearing, motor skills, learning & literacy.

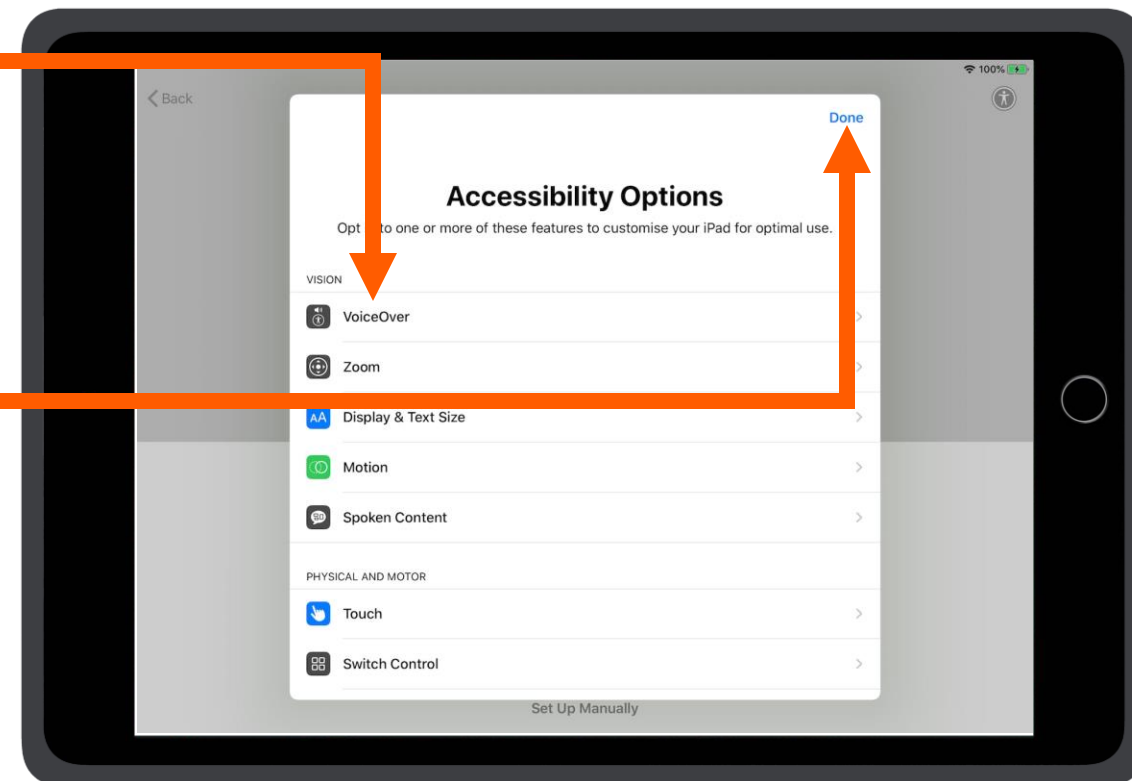
Tap the blue accessibility icon to see options available.



Setting up your iPad – Step 5

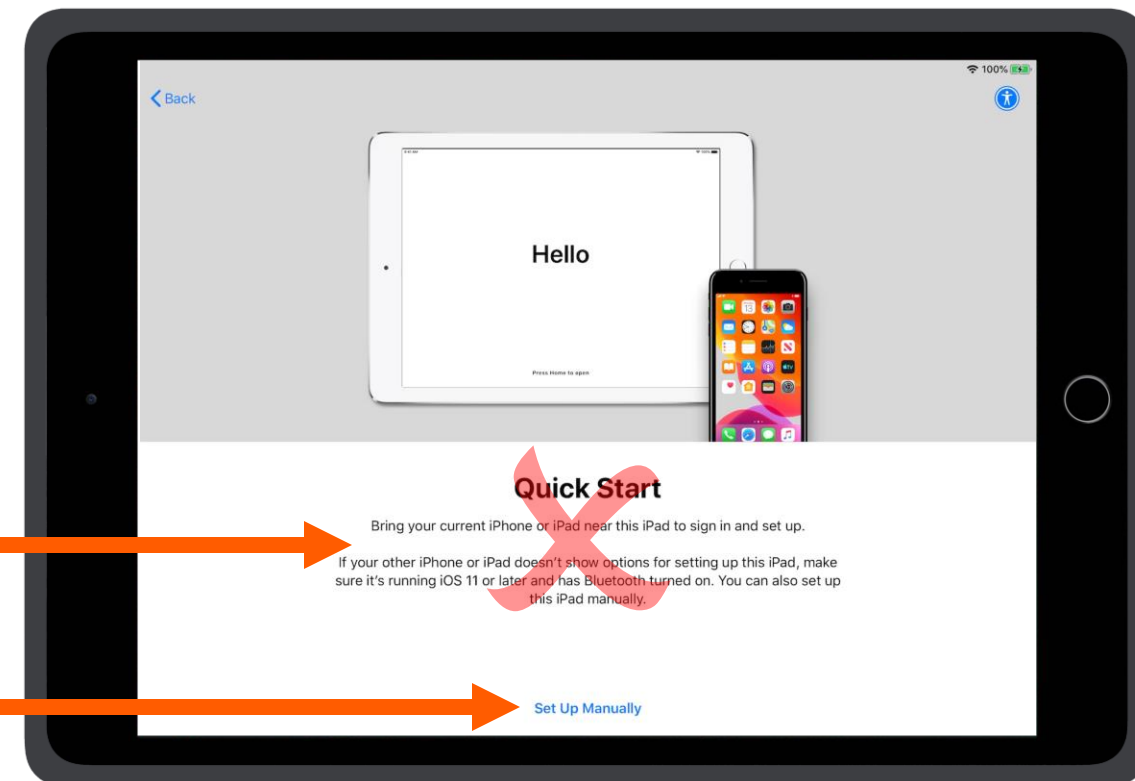
Tap an accessibility option to learn more and turn features on.

Tap **Done** to return to the previous screen.



Setting up your iPad – Step 6

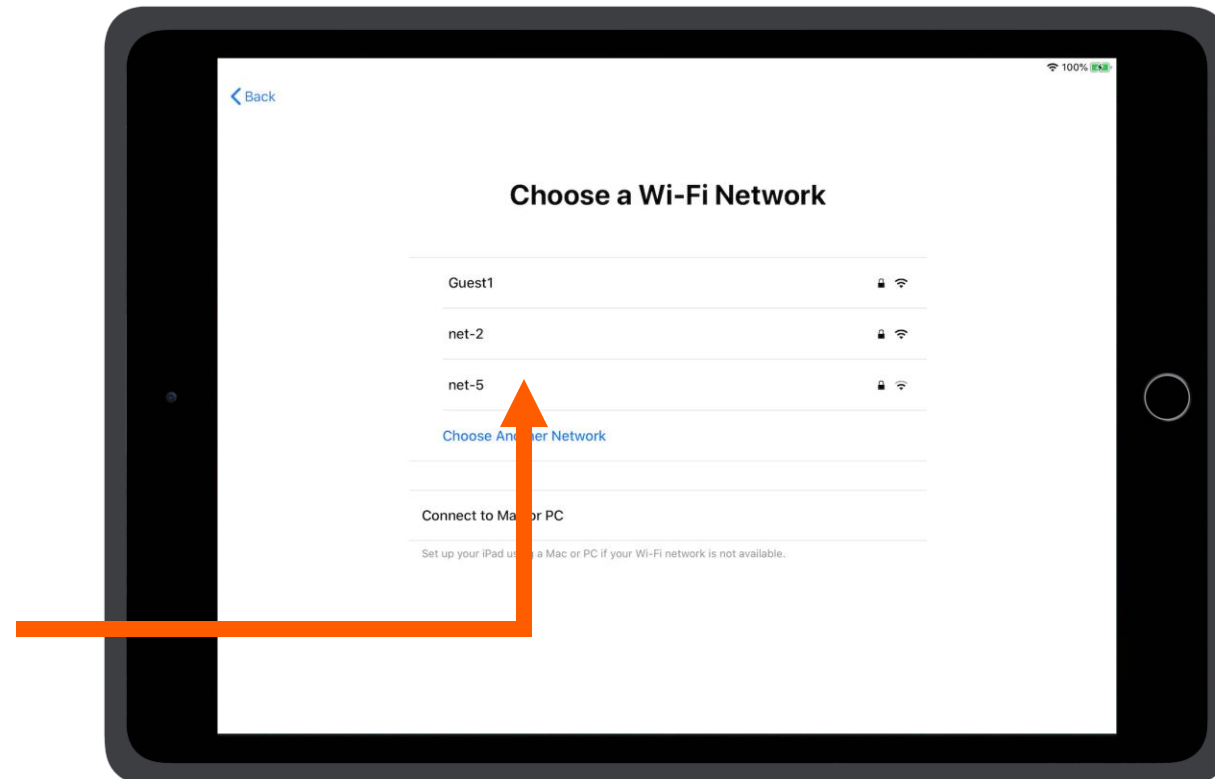
- Do **NOT** set up your iPad by following the 'Quick Start' instructions described here.



- Instead tap **Set Up Manually**.

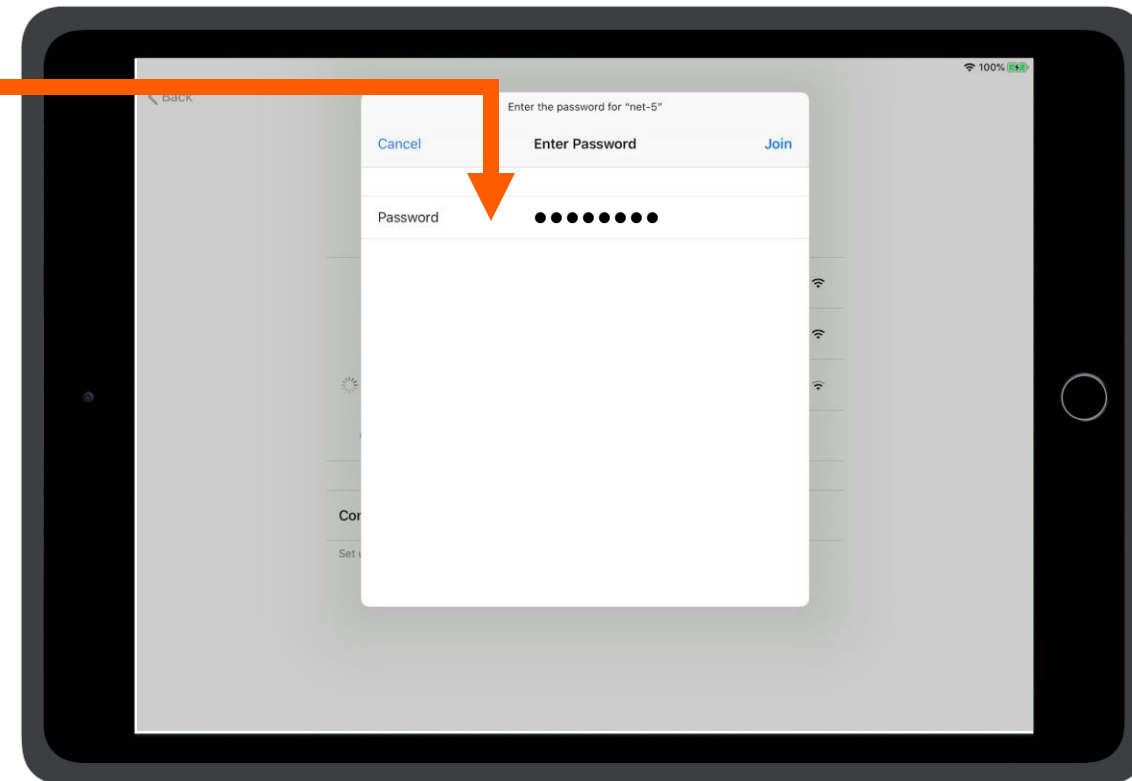
Setting up your iPad – Step 7

- You will need to have access to a Wi-Fi connection to continue with the setup process.
- If you are close to a Wi-Fi connection, a list of nearby Wi-Fi networks will be listed.
- Select the name of your Wi-Fi network from the list of networks available.



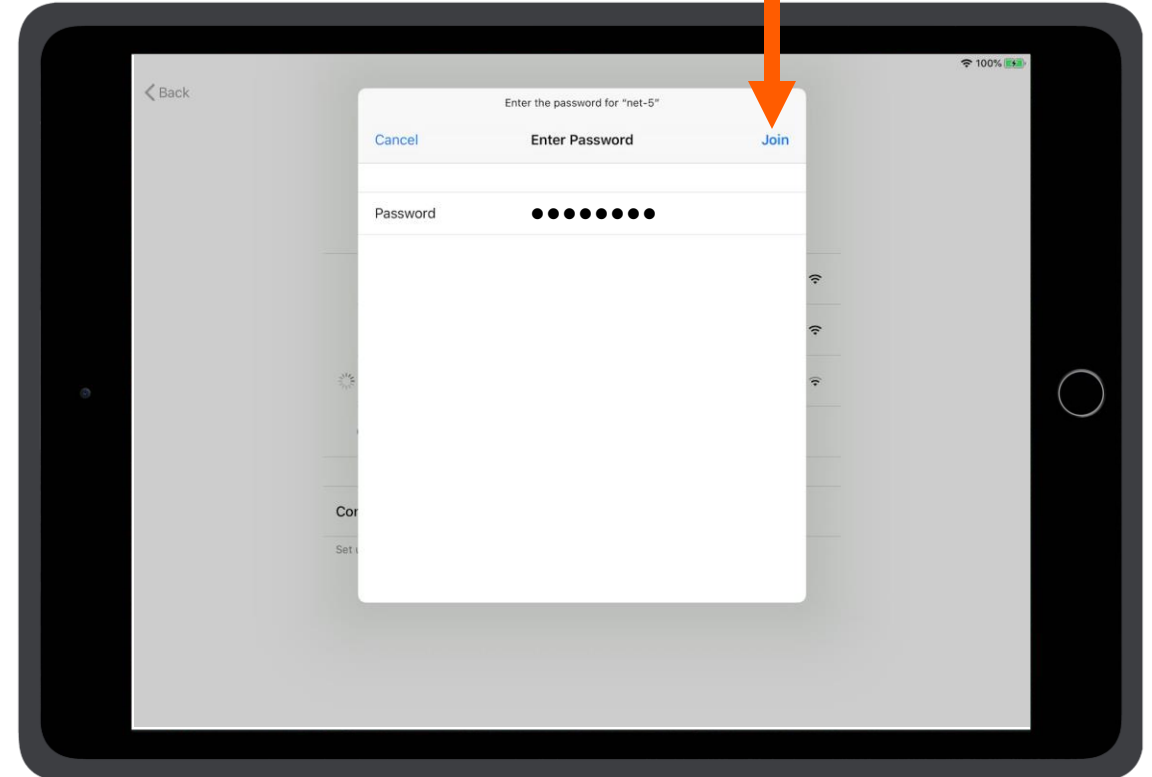
Setting up your iPad – Step 8

- Tap the Password box and enter the password for your Wi-Fi network.



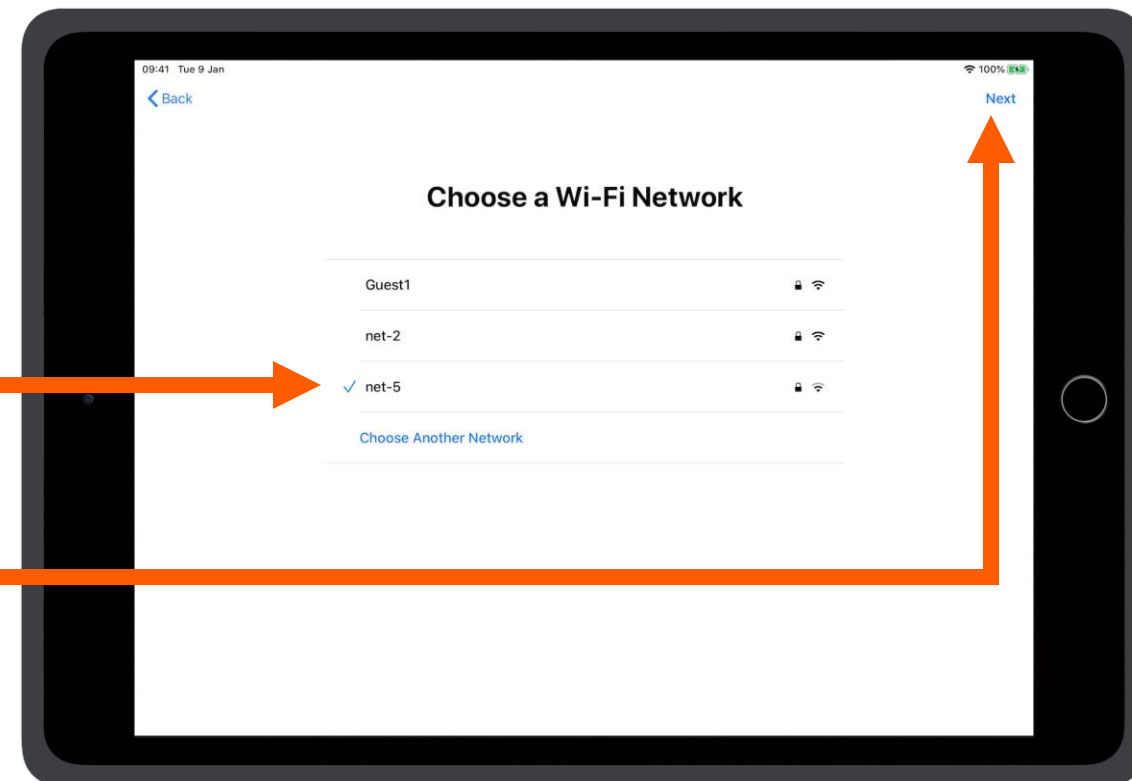
Setting up your iPad – Step 9

- Tap **Join**.



Setting up your iPad – Step 10

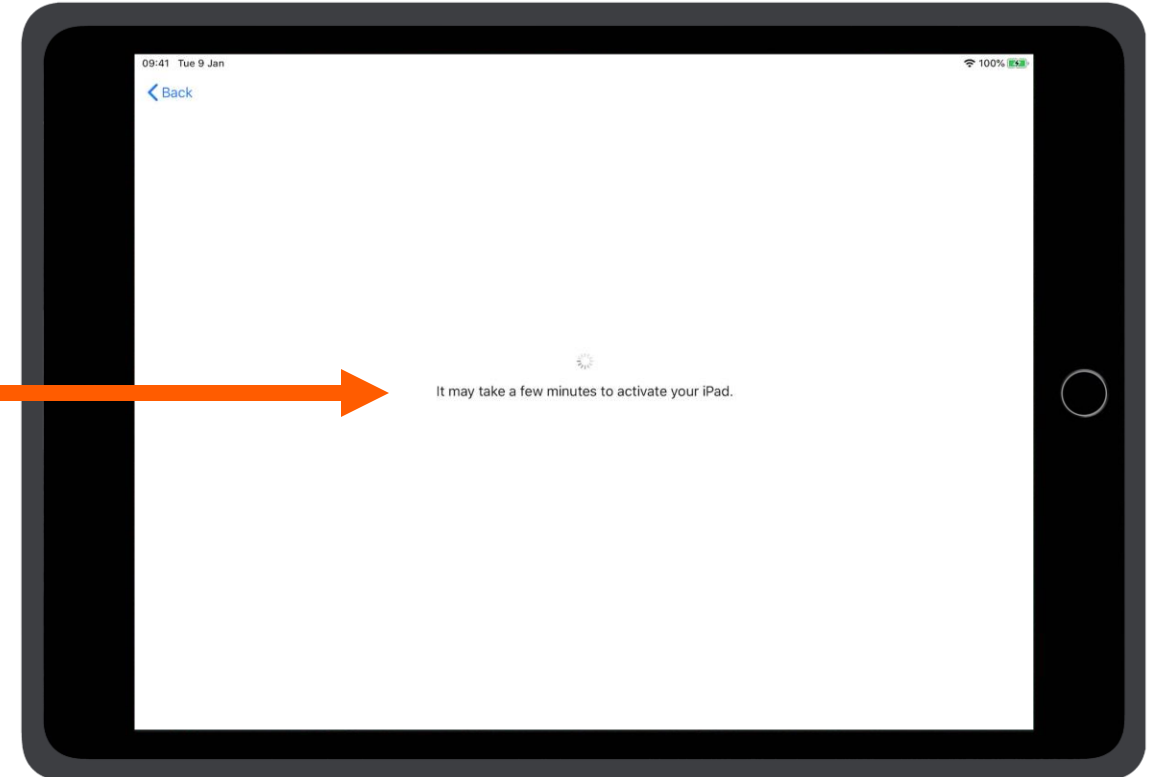
- A blue tick will confirm that you have successfully connected to your Wi-Fi network.



- Tap **Next** to Continue.

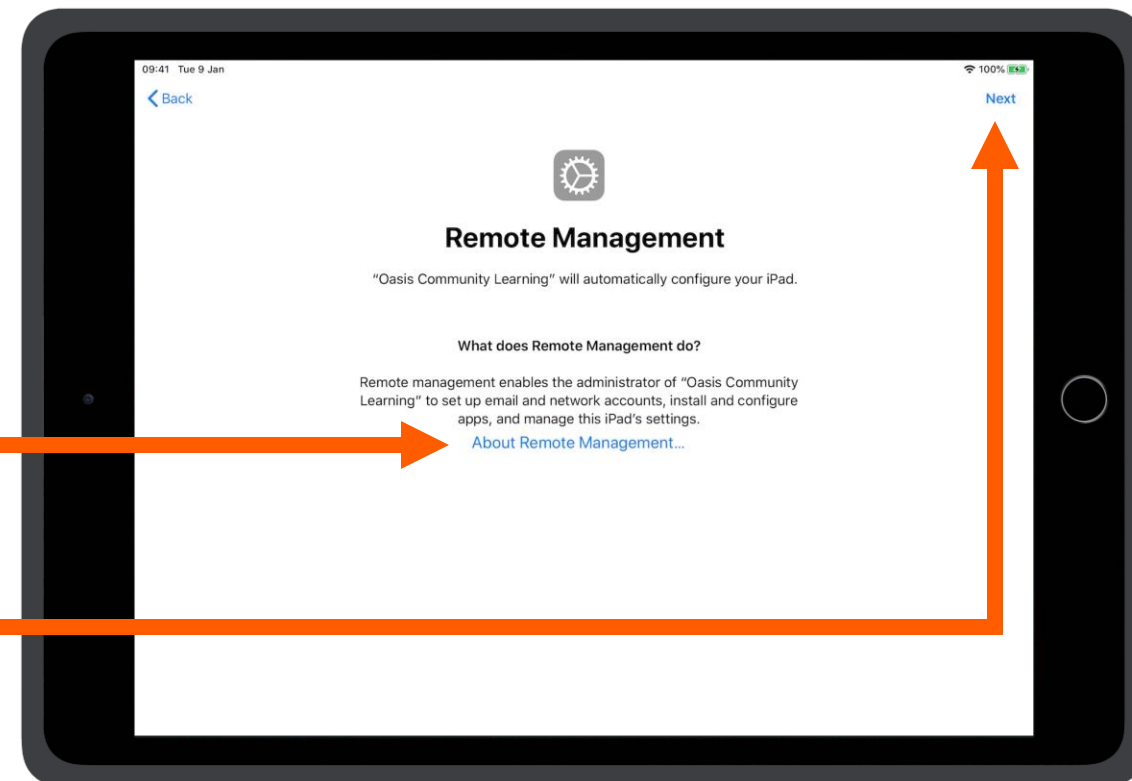
Setting up your iPad – Step 11

- Once you have connected to the internet your iPad will be activated.
- This may take several minutes.



Setting up your iPad – Step 12

- Your iPad will now be configured by Oasis Community Learning.
 - Tap **About Remote Management** to read more about how your device is managed.
- or
- Tap **Next** to continue.

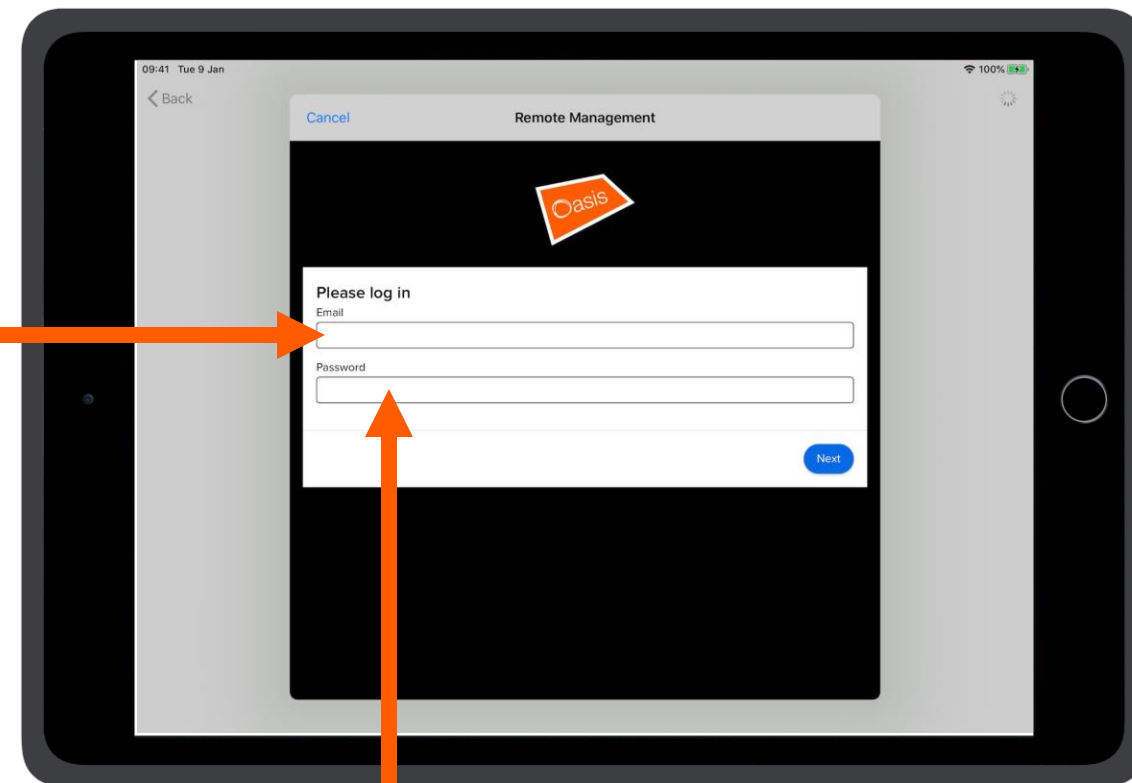


Setting up your iPad – Step 13

Enter your Oasis email address and password.

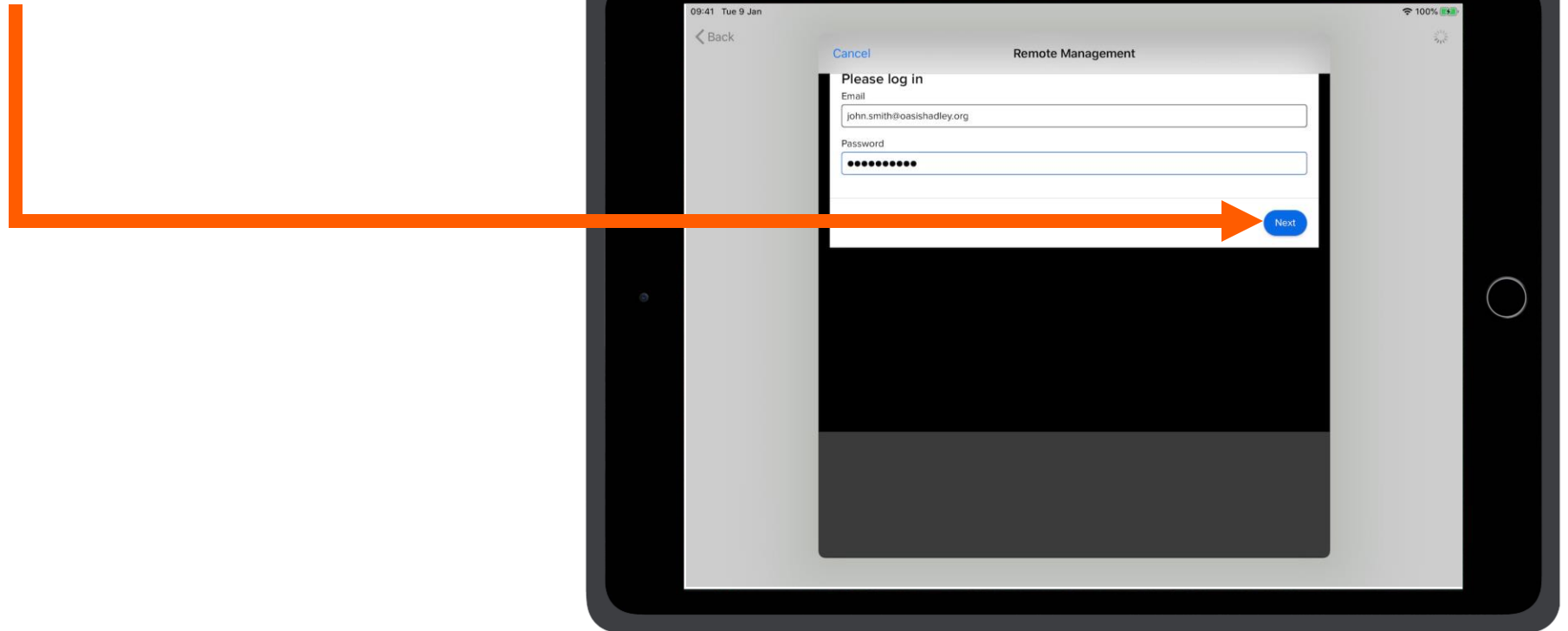
Tap the Email box and use your case keyboard or onscreen keyboard to type.

Tap the Password box and use your case keyboard or onscreen keyboard to type.



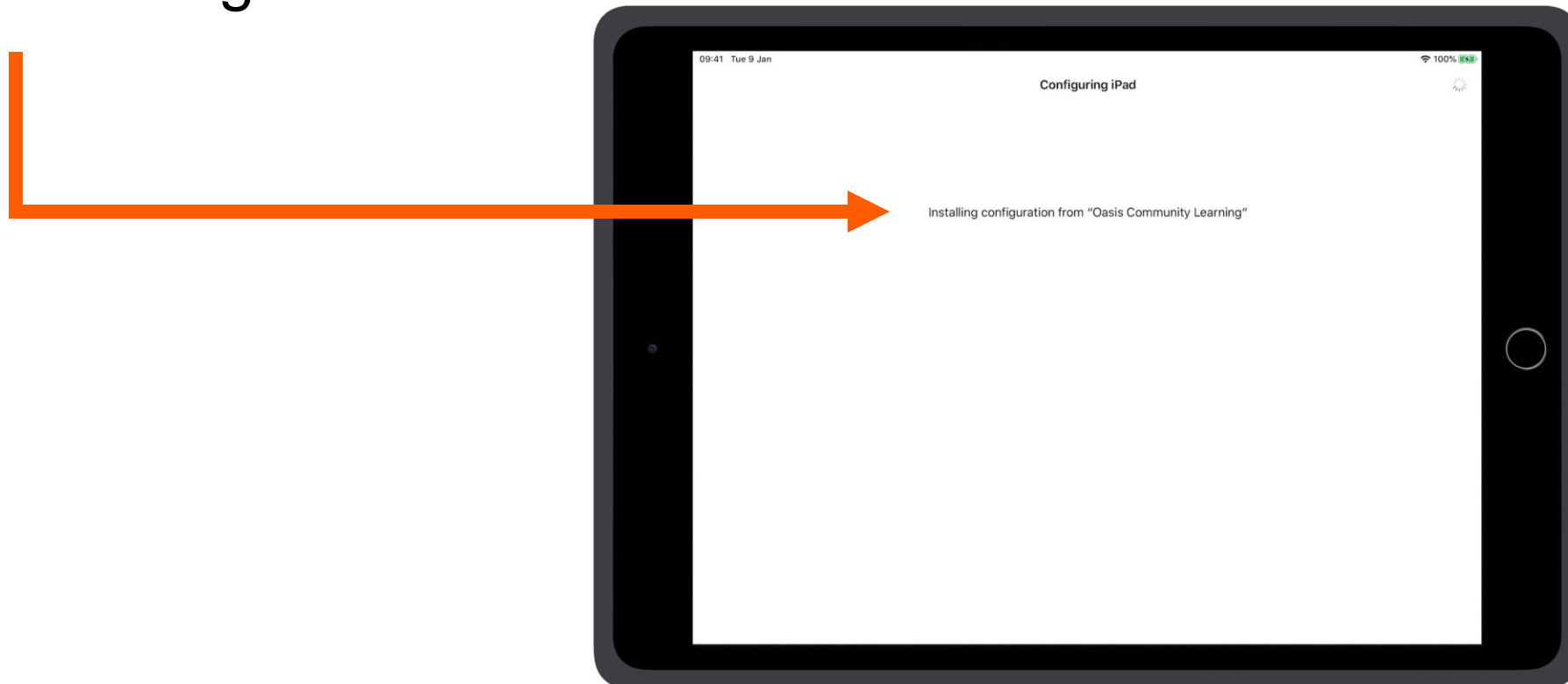
Setting up your iPad – Step 14

Tap **Next** to continue.



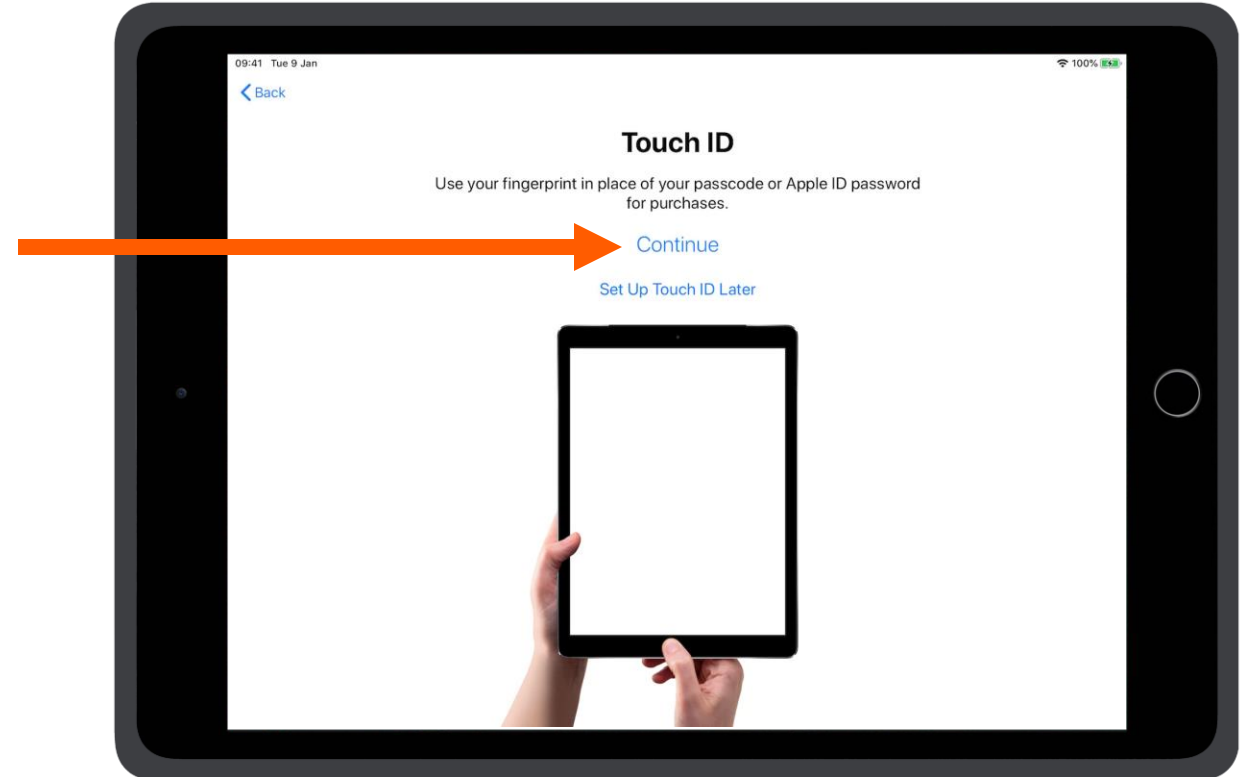
Setting up your iPad – Step 15

Your iPad will install configuration details.



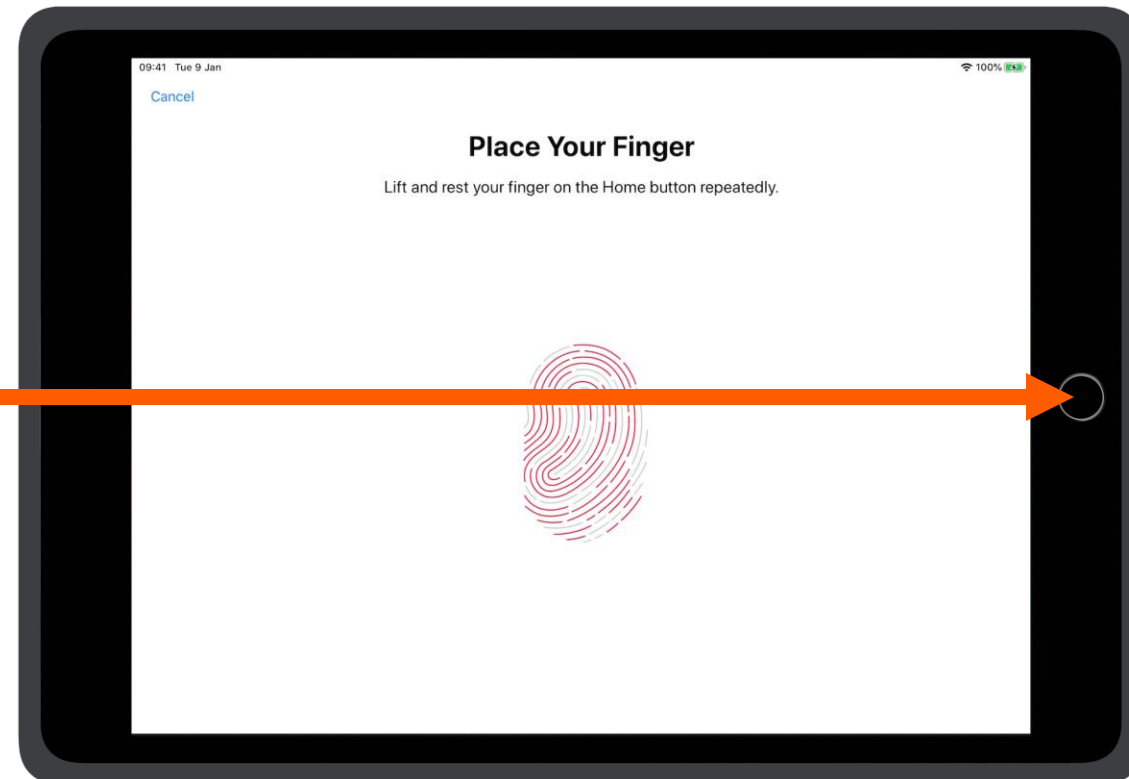
Setting up your iPad – Step 16

- We recommend you secure your iPad by registering your fingerprint.
- Tap **Continue** to register your fingerprint.



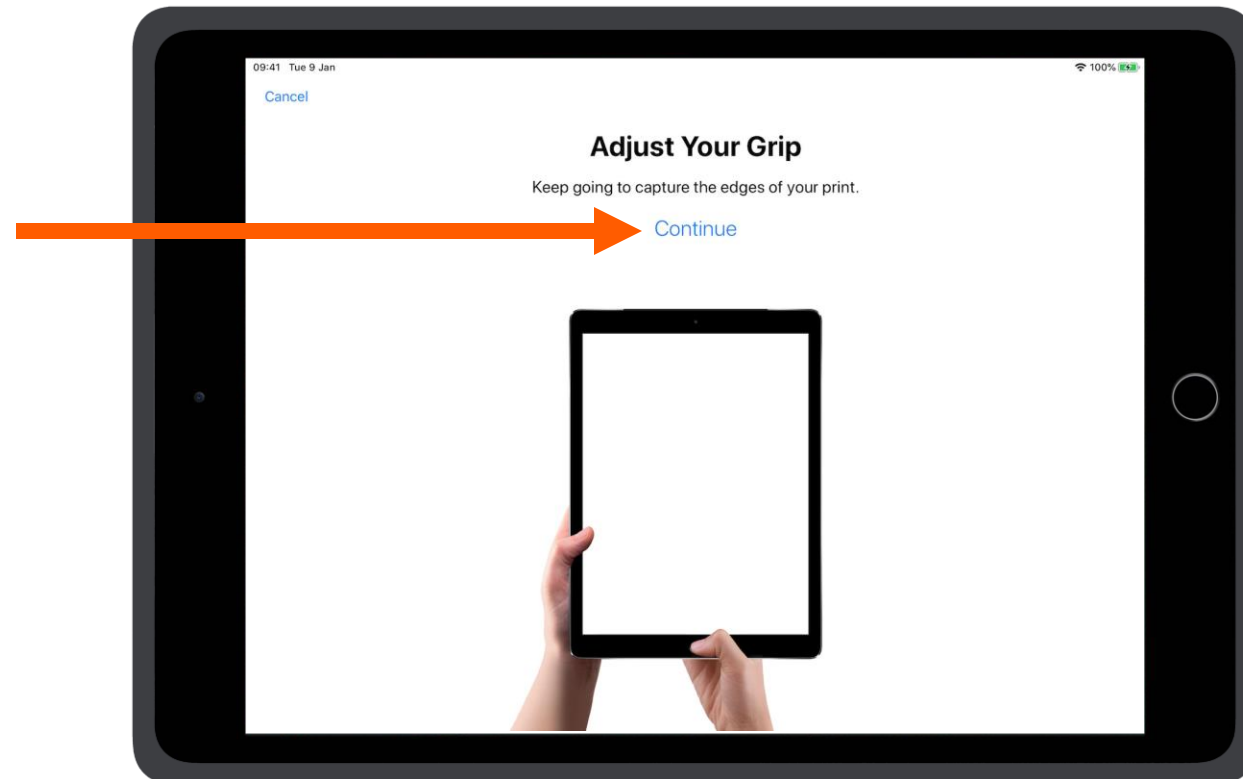
Setting up your iPad – Step 17

- Place the finger you want to register on the home button.
- Lift your finger and repeatedly place it on the home button so that your iPad can capture your fingerprint.



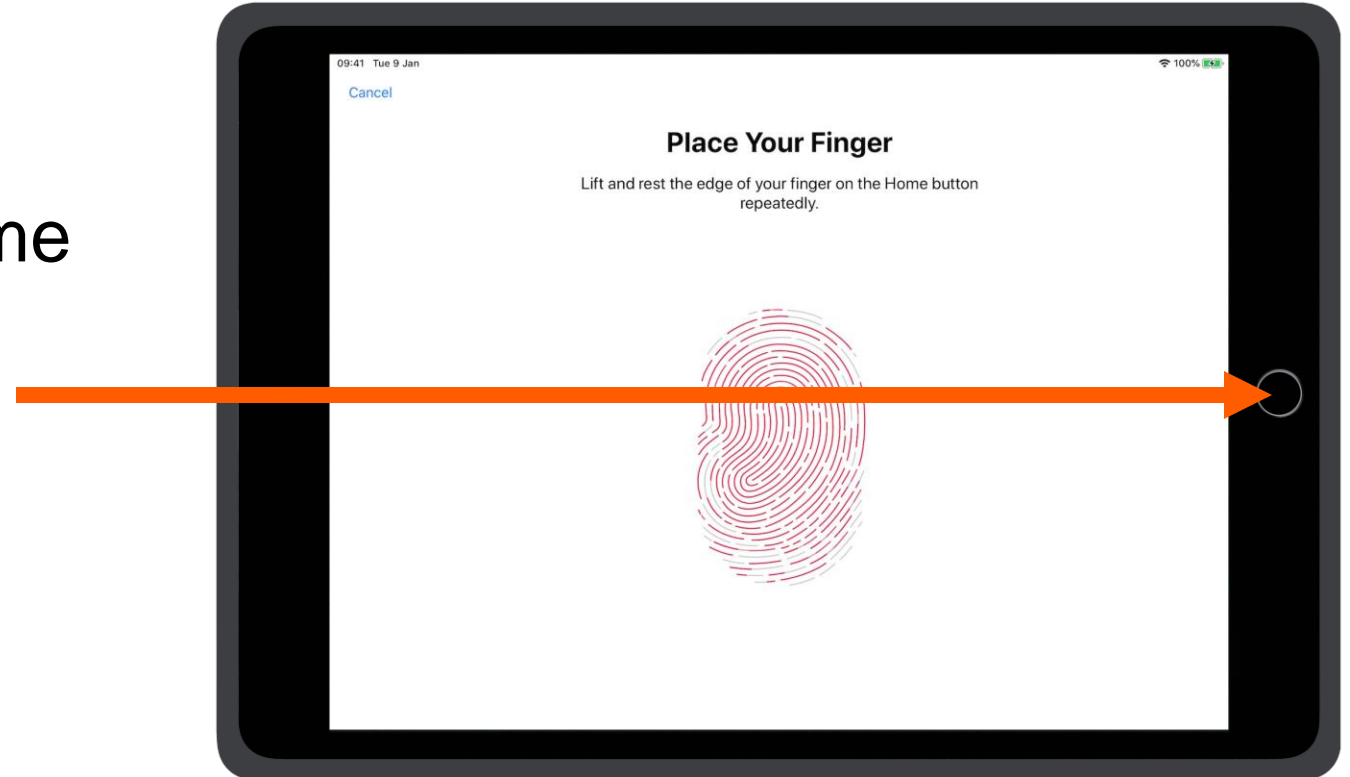
Setting up your iPad – Step 18

- When this message appears you will need to adjust your finger to capture the edges of your fingerprint. Tap **Continue**.



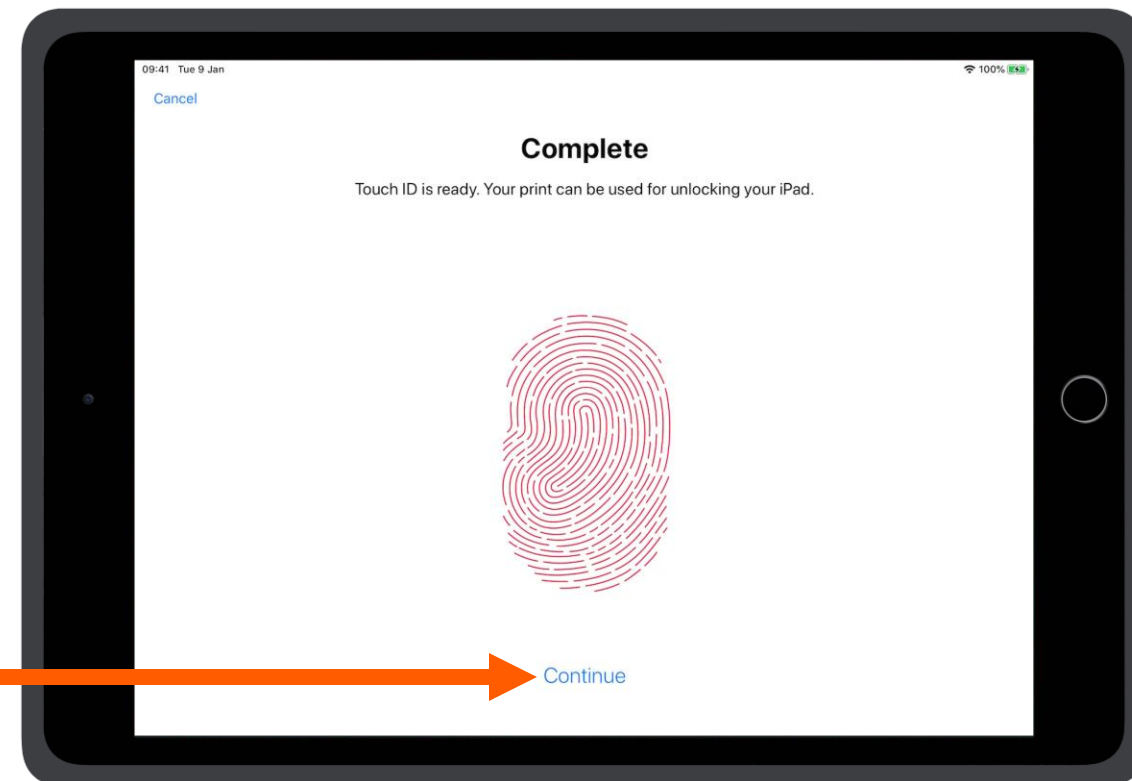
Setting up your iPad – Step 19

- Place the edges of the same finger on the home button.
- Lift your finger and repeatedly place the edge of it on the home button.



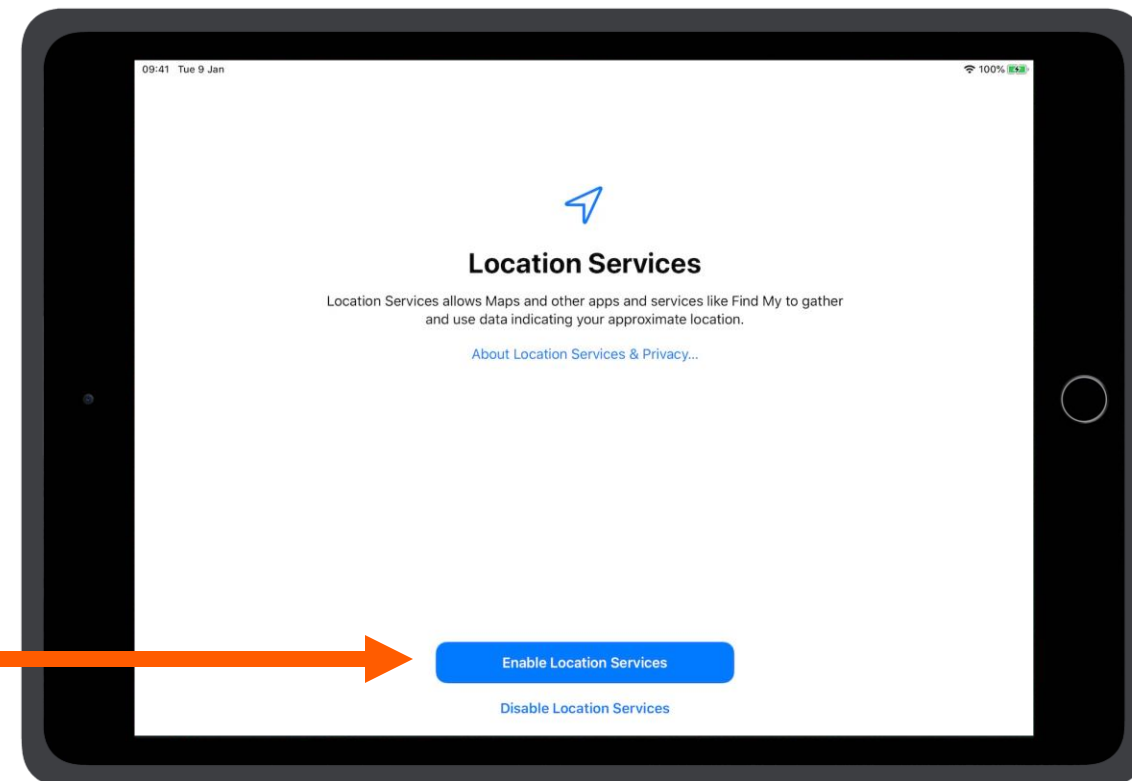
Setting up your iPad – Step 20

Once your fingerprint has been registered tap **Continue**.



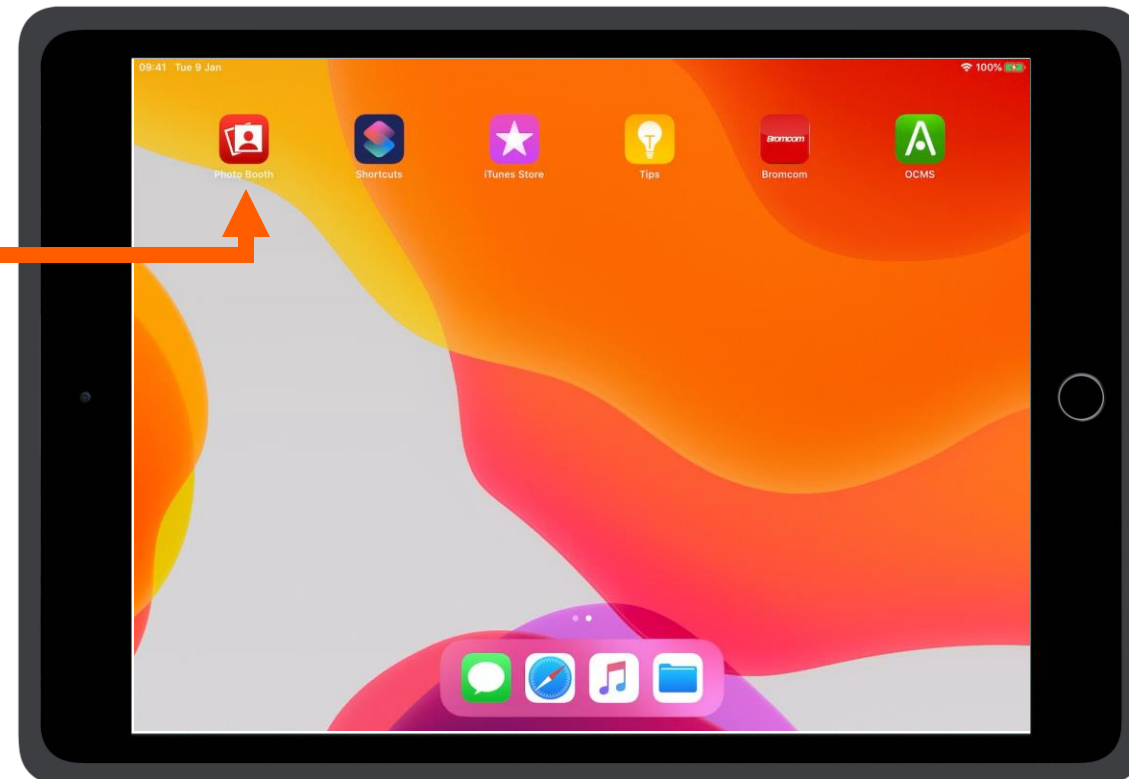
Setting up your iPad – Step 21

Tap **Enable Location Services**.
Choosing to disable this may prevent apps and features from working.



Setting up your iPad – Step 22

- The setup process is now complete.
- Your iPad will display applications available to use.



Setting up your iPad – Step 23

New apps may appear from time to time.

Applications may take time to install.

